

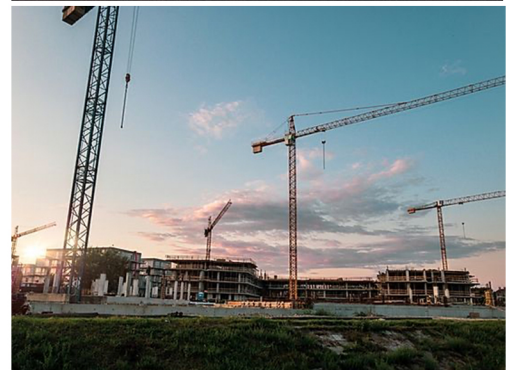


ZHICO

SERVICES

Environmental
Health and Safety
Management Systems
Training
Compliance Audits

BE Compliant
BE Prepared
BE Safe



Helping you WIN everytime.

Our Services

Our range of environmental and health and safety related services are designed to fully comply with legislation and applicable regulations whilst easily customizable to customer requirements. we remain committed to providing high quality and easy-to-use services in a timely manner, continuously improve our services and processes and to implementing innovative environmental and health and safety solutions.



ENVIRONMENTAL

- Develop a site specific Environmental Management Plan (EMPr).
- Develop an Environmental Management System (EMS).
- Environmental awareness training.
- Compilation of a site inspection environmental checklist .
- Record non-compliances, remedial actions and timeframes.
- Convene with Contractors to resolve non-compliance issues.
- Provide advice on any additional Environmental Assessments.
- Identify the protection of sensitive areas.
- Undertake monthly Environmental Control Officer (ECO) compliance monitoring.
- Monthly ECO report compilation.
- Asbestos survey.
- Waste management plans.
- Assist with 'duty of care' to the environment in accordance with Section 28 of the National Environmental Management Act.



HEALTH & SAFETY

- Creation of an effective, diligent and compliant occupational health and safety programme/system with the objective of preventing or reducing hazards and risks to employees, equipment, material and the environment by using your hazard assessments.
- Continuous monitoring and implementing methods of improving your occupational health and safety programme/system.
- Legal compliance evaluation.
- Health and Safety Inspections.
- Risk Assessments.
- Contractor and Sub-Contractor evaluation and monitoring.
- Development of Health and Safety Specification.
- Project health and safety plans.
- Emergency preparedness.



MANAGEMENT SYSTEMS

- Implementation and Maintenance of an in-house health and safety management system.
- ISO System Gap Analysis.
- Implementation of ISO 9001:2015.
- Implementation of ISO 14001:2015.
- Implementation of ISO 45001:2018.
- Integrating of ISO 14001:2015 and ISO 45001:2018 into ISO 9001:2015.
- Fully integrated management system (IMS) setup.
- Management System Auditing.



TRAINING

The following training courses are offered

- Legal Liability.
- Hazard Identification and Risk Assessment (HIRA).
- First Aid.
- Fire Fighting.
- Introduction to Asbestos.
- Environmental Control Officer (ECO).
- Construction Regulations.
- SANS10400.



BUILDING AUDITS

Building Audits iaw national building standards SANS10400 and iaw health and safety laws and regulations. We can assist with:

- Building Audits/Assesments
- Compliance Verification
- Achievement of Compliance
- Emergency preparedness
- Risk Assessments
- Health and Safety System implementation and maintenance

DILAPIDATION SURVEYING

Reduce potential liability claims through an independent, accurate and unbiased dilapidation survey of surrounding structures, infrastructure and services .

Verification through a dilapidation (condition) survey pre and post construction will assist in accurately documenting damages that may have either been present before construction or may have been caused during the construction process. Minimise the potential for being held liable for damage claims through a dilapidation survey, providing evidence to counter claims and liabilities.

Consulting that suit your needs.





OTHER

Though our relationships and "informal" partnerships, we are able to offer an extended set of services that may not be within our current service package, including:

- Occupational Hygiene
- Fire protection evaluation and risk assessment
- Stack emissions monitoring
- Environmental Impact Assessments and Environmental Management Plans

Integrity
Honesty
EXCELLENCE
SAFETY
QUALITY
PRODUCTIVITY
INNOVATION

Areas of Operation

ZHICO is prominent in the following industries: construction, renewable energy, commercial, manufacturing, petro-chemical, ports, harbours, and retail, amongst others.



CONTACT

Tel : _____
EMail : _____